



Data Logistics – System i Edition

ASD's Data Logistics – System i Edition is a revolutionary new tool that allows businesses to unlock the power of their IBM System i data using Microsoft's SQL Server 2005™ or 2008™ business intelligence software. The Data Logistics – System i Edition is a complimentary tool of the ASD BI Express suite of tools that helps customers gain better access to their iSeries data using Microsoft business intelligence. BI Express is a complete BI architecture for deploying and managing BI SQL Server BI solutions and it is designed to help developers build Microsoft BI applications faster and easier. Together, BI Express and Data Logistics – System i Edition provides iSeries users with an enterprise architecture unlike any vendor in the marketplace.

The Data Logistics – System i Edition automates the capture and movement of the data from the iSeries to a SQL Server 2005 or 2008 BI data repository without the user having to do any development on either platform to accomplish the task. All of the necessary coding on both servers along with any file construction is handled automatically using an automated process created by ASD. Both full file copies and net change file copies are supported and designed to run in a lights out environment. Now developers can focus on delivering reports, dashboards and timely access to iSeries data to users instead of focusing their efforts on moving data from one system to another!

A Revolutionary BI Data Movement Solution

The Data Logistics – System i Edition provides the following capabilities for iSeries users and eliminates the need to develop any code on the iSeries or SQL to move data between the two servers in support of BI solutions.

- > Performs analysis of all System i data to prepare for simplified data loading
- > Allows single or mass data loading of files from System i or SQL database
- > Supports full copy and net change data replication with or without journaling
- > Easy management and data synchronization between servers
- > Flexible job scheduling and no dependency on system availability
- > Data recovery at multiple points of potential failure
- > No coding required on iSeries or SQL for data movement
- > Loading statistics to ensure that data is processed accurately
- > ASCII and EBCDIC conversions handled automatically
- > Automatic creation of production, development or test BI data repositories
- > Ability to capture native DB2 source data in SQL Server data repository

What used to take me an hour now takes five minutes. ASD came up with a tool that is easy, solid and quick. It's a way to automate BI to take the manual work away—so we can focus on getting the data to the repository.

Donnie Jobe, Development Manager, Fabick CAT



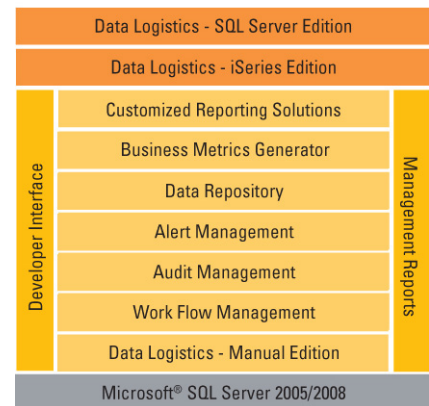
Microsoft BI For iSeries Users

ASD is a Premier IBM iSeries business partner that has been delivering advanced BI solutions for many years. Most iSeries customers are very happy with their transaction business systems, but they are frustrated with the difficulty users have when they try to access iSeries data for reporting, dashboards and analytical applications. Applications have been highly customized over many years and were not designed for reporting.

To unlock this valuable iSeries data ASD implements Microsoft business intelligence solutions that are included in every standard copy of SQL Server 2005 and 2008 database software. Microsoft is an industry leading provider of business intelligence server solutions that are tightly integrated into a robust suite of Office desktop tools. We have found that the Microsoft tools are a perfect fit for AS/400 customers for all the reasons listed below.

- > Most iSeries companies have Microsoft skills
- > Most companies have Windows infrastructure
- > Easy to use system with tight integration to iSeries
- > Single vendor for OS, database, BI and office tools
- > Offloads iSeries workload for queries & reporting
- > End users love Microsoft Office tools; Excel
- > Enterprise class business intelligence capabilities
- > Low cost acquisition and implementation
- > Scales from smallest to largest enterprise

ASD BI Express Components

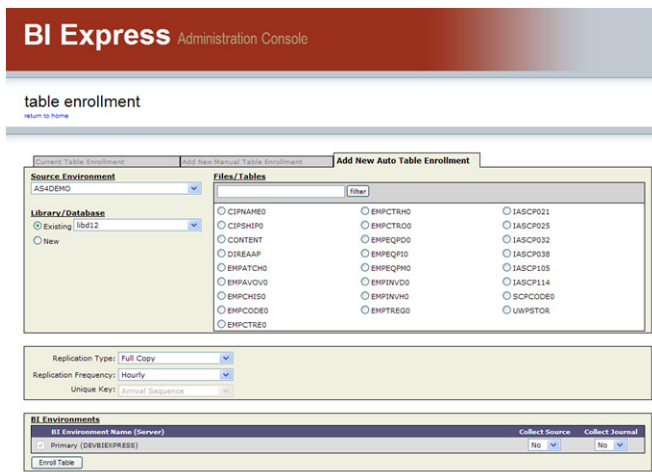


To learn more about BI Express visit www.asd.net.

Powerful Data Extraction Solution

Pulling iSeries data into an enterprise reporting data repository could not get any easier. Simply run the BI Express Pre-Enrollment Utility and the system will analyze the metadata in your System i files or SQL tables and prepare the data for data movement automatically. The utility identifies all data files and tables and collect the necessary metadata to quickly and easily enroll them using business logic to ensure journal files are set up properly for loading.

Users can then use the Mass Enrollment feature to enroll one or all files or tables into the BI Express SQL Server.



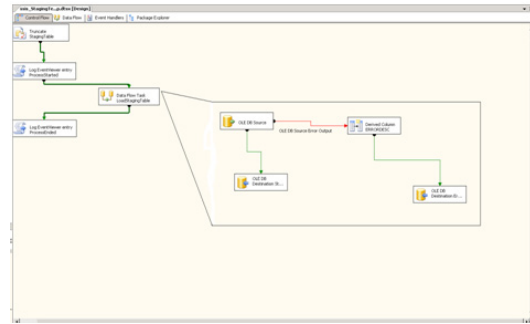
All data movement errors are tracked and users are notified with field specific identification. Once enrolled, full file and net change files are processed and moved from DB2/400 or SQL database to the BI data repository server. Unique keys are handled without user intervention and manual keys are also tracked and managed to allow users to specify any manual keys.

Dynamic Creation of Native SSIS Packages

It is important to note that all data movement programs and functions are generated dynamically and result in 100% native Microsoft or iSeries programs! BI Express is designed to dynamically build all the native Microsoft SQL Server coding that is required to build and implement the BI solution for each step summarized below.

- > Staging tables created on iSeries and SQL Server
- > SSIS packages created for all data movement
- > Communications linkages established between servers
- > Data format conversion from EBCDIC to ASCII
- > Packages established to schedule data collection
- > SQL Server agent jobs created
- > Data loaded from staging area to BI repository
- > Audit jobs created to monitor successful data loading

BI Express builds all necessary programs, tables and files to load the staged data repository. SSIS packages are created, as shown below, and can be reused for custom built code if needed for other BI applications.



Supports Full File Copy or Net Change

A critical component of any BI solution is the amount of time required to pull data from the source systems (iSeries) and subsequent loading of data into the BI Repository (SQL Server). Many BI solutions are implemented using daily collection during the batch window. But, very large iSeries files can take many hours to collect and load and severely impact the batch processing window.

To eliminate this operational impact, BI Express supports either a full file copy or net change. The full file copy captures a complete copy of all the records in the file each time the extraction process runs. Full file copies are normally used for files with small amounts of data. Net change is used for very large files that take advantage of the journaling capabilities of the iSeries or using BI Express built in net change process.

Multiple Source or Target Systems

BI Express has been designed to allow developers to pull data from multiple iSeries servers into one consolidated BI repository. Data Logistics - System i Edition can be installed on all distributed iSeries (or SQL) servers and data from each server can be collected and loaded automatically into one central reporting repository. Financial or business data can now be consolidated from multiple distinct companies, division, or applications to create one corporate data repository for reporting or analysis. Source data can be automatically pulled from iSeries or SQL using the Data Logistic Editions or from any other data source. BI Express allows developers to enroll tables from source systems without using the Data Logistics modules and SSIS can be developed one time to pull data from Excel, Access or any database server.

BI Express creates a primary BI environment which is the SQL Server where BI Repository is stored. BI Express can also create duplicate BI repositories automatically for use as separate development, test, training or distributed reporting servers. All servers are automatically updated without any user intervention.

Technology People. Business Results. We create business intelligence solutions that enhance your success today and in the future. First we study your business, then we design the solution, implement the architecture, and select the software and hardware required to get the job done.

Morton, Illinois > 877.ASD.4968 or 309.263.7944

St. Louis, Missouri > 866.ASD.9406 or 314.317.9406

www.asd.net

